

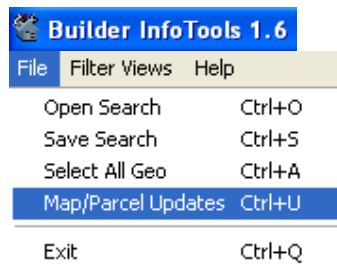
Builder InfoTools™ Subscribers Can Now Update Map Base Layers and Digital Parcels Via the Internet

To Update Map Base Layers:

1. Identify the **Builder InfoTools™** version you are using, look at the upper left hand corner of the program to determine your version.

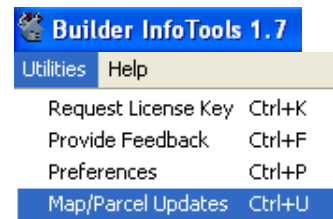
For Builder InfoTools™ 1.6:

Click on the **File** menu on the toolbar and select **Map/Parcel Updates** from the drop down window.



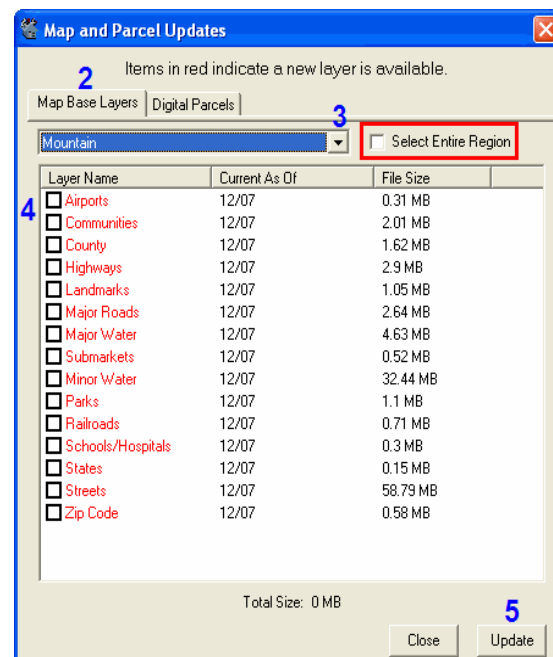
For Builder InfoTools™ 1.7:

Click on the **Utilities** menu on the toolbar and select **Map/Parcel Updates** from the drop down window.



2. The **Map and Parcel Updates** window will appear. To update **Map Base Layers**, select the **Map Base Layers** tab (new map layers available for update will be indicated in **RED**).
3. Select the region you want to update from the drop down menu.
4. Place a check mark next to the layer you want to update or you can choose to update the "**Entire Region**", this will select all the layers.
5. Click on the **Update** button to initiate the update.

Note: Downloads can be large files and will require longer upload time. Contact **Customer Service** at **1.877.275.8647** for questions or if you become disconnected during an upload.

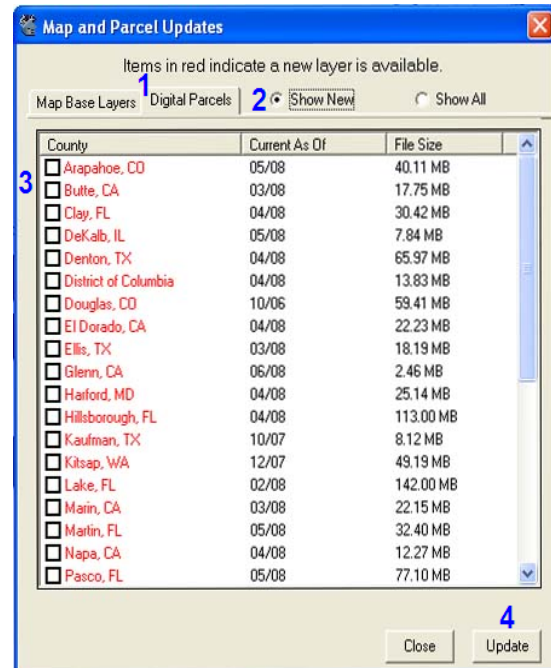


Call 1.877.275.8647 for Technical Support

To update Digital Parcels:

1. Select the **Digital Parcels** tab from the **Map and Parcel Update** window.
2. Digital parcels that have a new layer available will be indicated in **RED**. You can also click on the **Show New** button to sort by parcels to update.
3. Place a check mark next to the market you want to update.
4. Click on the **Update** button to initiate the update.

Note: Downloads can be large files and will require longer upload time. Contact **Customer Service** at **1.877.275.8647** for questions or if you become disconnected during an upload.



Call 1.877.275.8647 for Technical Support